

GOBI+ 640 SERIES

Thermal LWIR Camera

- LWIR uncooled camera with 640 x 480 resolution
- Microbolometer detector



SMALL, HIGH PERFORMANCE UNCOOLED THERMAL CAMERA

The Gobi+ 640 series is based on an uncooled microbolometer detector with a 640 x 480 pixel resolution.

The Gobi+ 640 offers frame rates up to 60 Hz and lower detector NETD options.

The cameras come with either a CameraLink or GigE Vision interface.

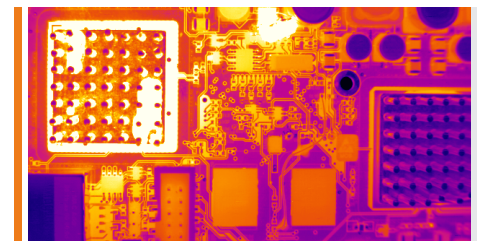


DESIGNED FOR USE IN

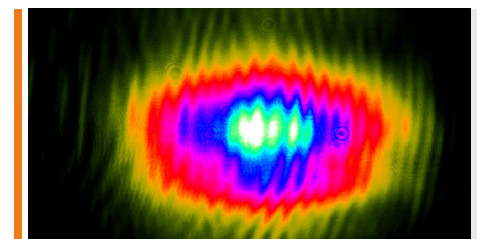
- Scientific & Advanced research
- Medical
- Process Monitoring

ADVANTAGES

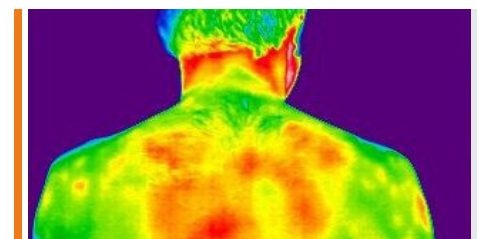
- Compact size
- Easy connectivity via multiple interfaces
- Frame rates up to 60 Hz
- Lower detector NETD options
- Temperature calibrations for thermographic applications



PCB Inspection



Laser beam analysis



Medical: infection detection

SPECIFICATIONS

Camera Specifications	Gobi+ 640 CL	Gobi+ 640 GigE
Mechanical specifications		
Approximate Dimensions - excluding lens [width x height x length] [mm]	49 x 49 x 62	49 x 49 x 79
Weight [gr] - excluding lens	208	263
Optical interface	M42 or M34 x 0.75	
Connector GigE	-	RJ-45
Connector CameraLink	Standard SDR	
Connector power	Hirose HR10-7R-SA[73]	
Connector trigger	SMA	
Environmental & power specifications		
Operating case temperature [°C]: also available in temperature range 0 - 50	From -40 to +60	
Storage temperature [°C]	From -40 to +85	
Power consumption [W]	3.4	4.9
Power supply voltage	DC 12 V	DC 12 V or PoE [Power over Ethernet]
Shock	40 g, 11 ms, MIL-STD810G/MIL-STD883J	
Vibration	5 g [20 - 2000 Hz], MIL-STD810G/MIL-STD883J	
IP Rating	IP 40	
Regulatory compliance	CE, RoHS	
Electro-optical specifications		
Image format [pixels]	640 x 480	
Pixel pitch [µm]	17	
Detector type	a-Si microbolometer	
Integration type	Rolling shutter	
Active area and diagonal [mm]	10.88 x 8.16 [diagonal 13.6]	
Detector NETD [Noise Equivalent Temperature Difference] [mK]	<50 [at 30 Hz, 300 K, F/1]	<50 [at 30 Hz, 300 K, F/1]
Spectral range [µm]	8 - 14	
Pixel operability	>99.5%	>99.5%
Max frame rate [Hz] [full frame]	60	60 [or 9]
Integration time range [µs]	1 - 80	
Region of interest	Yes	
Min region size [pixels]	160 x 120	
Analog-to-Digital [ADC] [bits]	16	
Command and control	CameraLink	GigE Vision
Digital output format	CameraLink [16 bit]	GigE Vision [16 bit]
Trigger	In or out via SMA or in via CL-CC1 [configurable]	In or out via SMA [configurable][not for 9 Hz]
Product selector guide		
Part number	XEN-000645	XEN-000646 XEN-000647 [9 Hz]



For more information on our products
Please scan the QR code.

www.xenics.com | www.sinfrared.com

Xenics
Infrared Solutions
ISO 9001:2015