



海纳光学

电话: 0755-84870203

邮箱: sales@highlightoptics.com

Electro MIR

— Supercontinuum lasers

— SCIENTIFIC

— NIR - MID IR

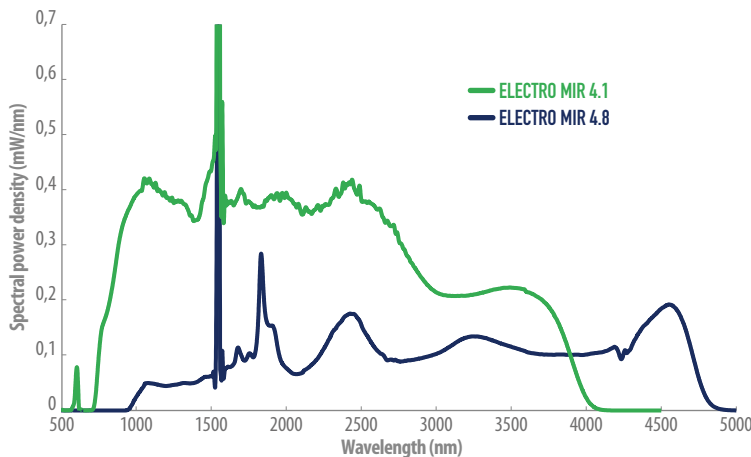


MID IR SUPERCONTINUUM LASER



ELECTRO MIR

is the new generation of supercontinuum laser delivering a unique spectrum in the Mid-IR. **ELECTRO MIR** is based on LEUKOS' over 10 years' experience in the field of supercontinuum laser.

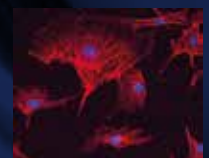
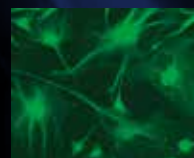


FEATURES

- Mid IR spectrum up to 4800 nm
- Spatially singlemode
- Total average power up to 800 mW
- Repetition rate > 100 kHz
- Flexible fiber output
- Achromatic collimation
- Maintenance-free
- Long lifetime

APPLICATIONS

- High resolution imaging
- Flow cytometry
- OCT
- Microscopy
- Optical component characterization



LEUKOS

Make a bright future

Electro MIR

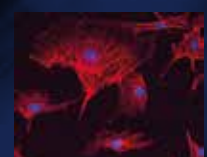
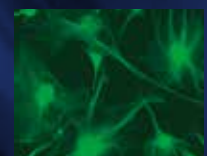
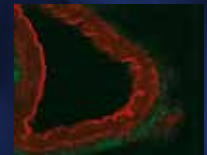
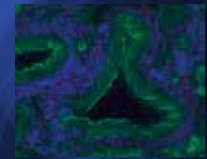
MID IR SUPERCONTINUUM LASER

ELECTRO MIR is based on LE VERRE FLUORE over 38 years' experience in fluoride fibers. **ELECTRO MIR** is built on a mature reliable technology, the laser is turnkey, easy to operate and delivered with real achromatic collimated output to ensure a perfect collimation over its wide spectral range.

- Supercontinuum lasers
- SCIENTIFIC
- NIR - MID IR



| OPTICAL SPECIFICATIONS | | ELECTRO MIR 4.1 | ELECTRO MIR 4.8 |
|------------------------|------|---|-----------------|
| Spectral bandwidth | mini | < 800 nm | < 800 nm |
| | max | > 4100 nm | > 4800 nm |
| Total average power | | > 800 mW (typ. 1W) | > 500 mW |
| Repetition rate | | > 100 kHz | |
| Seed pulse width | | > 100 ps | |
| Power stability | | < +/- 1 % | |
| Spatial mode | | Singlemode | |
| Polarization state | | Unpolarized | |
| Output connection | | FC/APC Collimator (~ 1 meter armored cable) | |
| Synchronization output | | External trigger output | |
| Interlock connector | | 2-pin LEMO | |
| OTHER SPECIFICATIONS | | | |
| Control interface | | Front panel and USB | |
| Operating temperature | | +10°C to +40°C non condensing | |
| Weight | | < 8 kg | |
| Dimensions (LxWxh) | | 485x250x134 mm | |
| Power requirements | | 100-240 V, 50/60 Hz | |



ADDITIONAL EQUIPMENT

Achromatic collimated output

Easy fiber coupling with Pop

Tunable filters : AOTF, monochromators, custom

OPTION

External or internal trigger

LEUKOS
Make a bright future

电话: 0755-84870203

邮箱: sales@highlightoptics.com



CAUTION – VISIBLE AND INVISIBLE LASER RADIATION AVOID EYE AND SKIN EXPOSURE TO DIRECT OR SCATTERED RADIATION CLASS 4 LASER PRODUCT