

# BeamOn HR 1"



Innovative 20 MP Beam Profiler with enhanced sensitivity at NIR, exceeding 1350 nm

Multiple active areas for multi beam analysis

Versatile – Measures **Profile, Power and Position**

## Specifications

<b>Laser Type</b>	CW & Pulsed
<b>Beam width resolution</b>	1 micron or better
<b>Resolution (H x V pixels)</b>	5496 x 3672
<b>Beam Size</b>	ø30 µm - ø8 mm
<b>Spectral Response</b>	350 – 1600 nm (VIS NIR)
<b>Sensor Active Area (mm)</b>	Diagonal 15.9 mm 13.2 x 8.8, sensor can be divided into multiple active areas, working in parallel for <b>up to 400 sectors (NEW)</b>
<b>Gain Control</b>	Up to 450
<b>ADC Dynamic Range</b>	16 bit
<b>Shutter Speed</b>	Shutter - 32 µsec to 2000 sec

<b>Pixel Size</b>	2.4 µm x 2.4 µm
<b>Exposure Control</b>	Programmable via GUI
<b>Accessories</b>	-IR Edge Filter -C-Mount Filter
<b>Power Supply</b>	~10 Watt , 5V 3A
<b>Housing Size in mm</b>	ø62 (see drawing)
<b>Weight (typical)</b>	300 gr.
<b>Min. Hardware Requirements</b>	CPU i3 1.6 GHz, 4 GB RAM
<b>Interface – USB 3.0</b>	Windows 8/10/11
<b>Mechanical Interface</b>	Post mounting: M4 Optical attachments & filters: C-mount

<b>Wavelength</b>	633	980	1310
<b>Saturation</b>	20 µW/mm <sup>2</sup>	100 µW/mm <sup>2</sup>	0.2 W/mm <sup>2</sup>
<b>Sensitivity</b>	Better than 1 nanoW/mm <sup>2</sup>	Better than 1 nanoW/mm <sup>2</sup>	20 µW/mm <sup>2</sup>

## Ordering Information

**BEAMON-1"**: The system consists of a camera, cable, mounting post, carrying case, software on a CD/Flash Drive

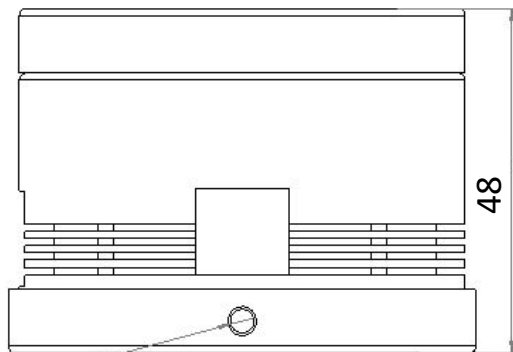
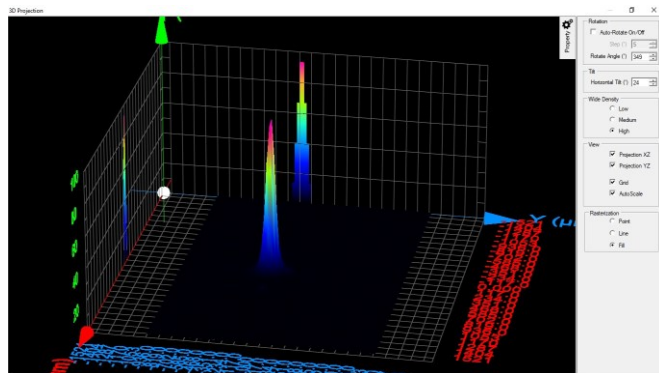
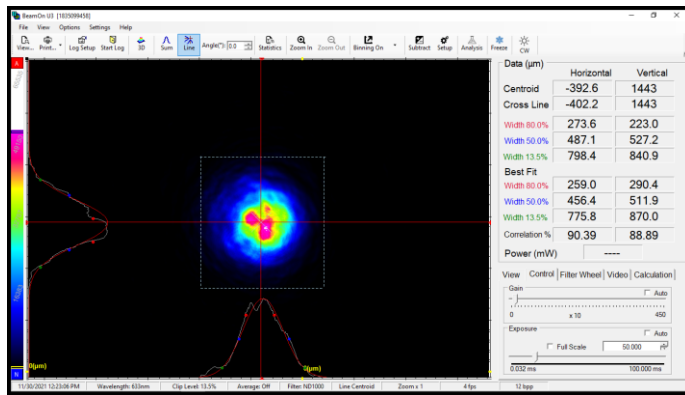
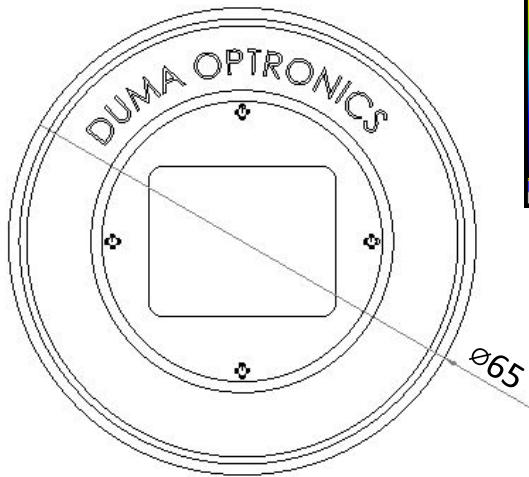
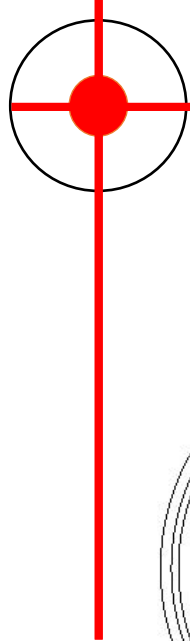
# DUMA OPTRONICS LTD.



电话: 0755-84870203  
网址: www.highlightoptics.com

May 2022

# BeamOn HR 1"



M4

Dimensions are in mm.

## Ordering Information

**BEAMON-1"**: The system consists of a camera, cable, mounting post, carrying case, software on a CD/Flash Disk

DUMA OPTRONICS LTD.



海纳光学

电话: 0755-84870203

网址: [www.highlightoptics.com](http://www.highlightoptics.com)

May 2022