

T-MM2 Datasheet



- Two-axis kinematic mount with $\pm 5^\circ$ range
- Repeatability down to 0.015°
- Holds 2" (50 mm) optics; adaptors available for C-Mount, 1" (25 mm), and 1/2" (12.5 mm) optics
- Built-in controller; daisy-chains data and power with other T-Series products

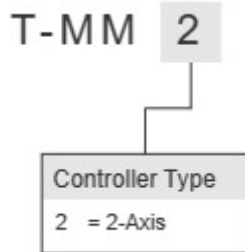
T-MM Series Overview

The T-MM2 Series are motorized two axis mirror mounts. They can be controlled manually or by using the RS-232 serial interface.



For more information visit: <https://www.zaber.com/products/optical-mounts/T-MM>

T-MM Series Part Numbering



T-MM2 Bundle Options

This device may be purchased stand-alone or bundled with one of the following accessory kits:

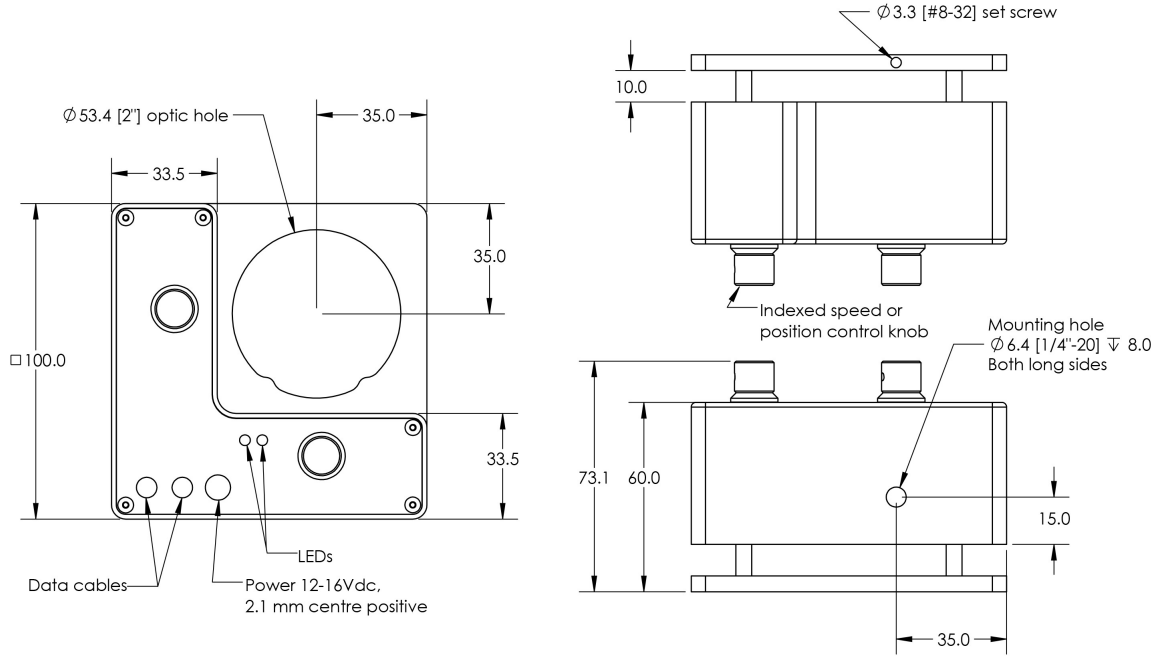
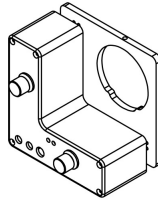
Products	Description
T-MM2	Motorized mirror mount, 2 axis, 1/4"-20 thread with M6 adaptor, RS-232 plus manual control
with KT04U accessory kit Power supply: 15 V. Powers multiple axes	<ul style="list-style-type: none"> • 1 x PS04-15V26: Power Supply, 15 V DC 2.67 A out, 100-240 V AC in, plug for North America International Plug Adaptor Included on Request • 1 x T-DC06: Data Cable, 6 ft, for Use with all T-Series and A-Series Product • 1 x T-DSUB9: Serial Adaptor • 1 x T-USBDC: USB to Serial Converter, with Mini-Din 6 Female Plug
with KT03U accessory kit Power supply: 15 V. Powers multiple axes	<ul style="list-style-type: none"> • 1 x PS03-15V12U: Power Supply, 15 V DC 1.2 A out, 100-240 V AC in, Universal Plug Adaptors • 1 x T-DC06: Data Cable, 6 ft, for Use with all T-Series and A-Series Product • 1 x T-DSUB9: Serial Adaptor • 1 x T-USBDC: USB to Serial Converter, with Mini-Din 6 Female Plug



T-MM2 Drawings

ZABER

T-MM Motorized Mirror Mount
dimensions in mm



DWG 1115 801



T-MM2 Specifications

Specification	Value	Alternate Unit
Microstep Size (Default Resolution)	0.000086°	1.501 μ rad
Built-in Controller	Yes	
Range	+/-5.27°	
Accuracy (unidirectional)	0.06°	1.047000 mrad
Repeatability	< 0.015°	< 0.262 mrad
Backlash	< 0.03°	< 0.523 mrad
Maximum Speed	3.44°/s	1 rpm
Minimum Speed	0.000806°/s	14.067 μ rad/s
Speed Resolution	0.000806°/s	14.067 μ rad/s
Encoder Type	None	
Communication Interface	RS-232	
Communication Protocol	Zaber Binary	
Maximum Centered Load	15 N	3.4 lb
Maximum Current Draw	530 mA	
Power Supply	12-16 VDC	
Power Plug	2.1 mm center positive	
Angular Motion Per Motor Rev	0.264°	
Motor Steps Per Rev	48	
Motor Type	Stepper (2 phase)	
Inductance	55 mH/phase	
Default Resolution	1/64 of a step	
Data Cable Connection	Minidin 6	
Mechanical Drive System	Precision lead screw	
Limit or Home Sensing	Magnetic home sensors	
Manual Control	Yes	
Axes of Motion	2	
LED Indicators	Yes	
Mounting Interface	1/4-20 threaded adapter	
Operating Temperature Range	0 to 50 °C	
Optic Mounting Interface	2" diameter optics	

Specification	Value	Alternate Unit
Vacuum Compatible	No	
RoHS Compliant	Yes	
CE Compliant	Yes	
Weight	0.55 kg	1.213 lb