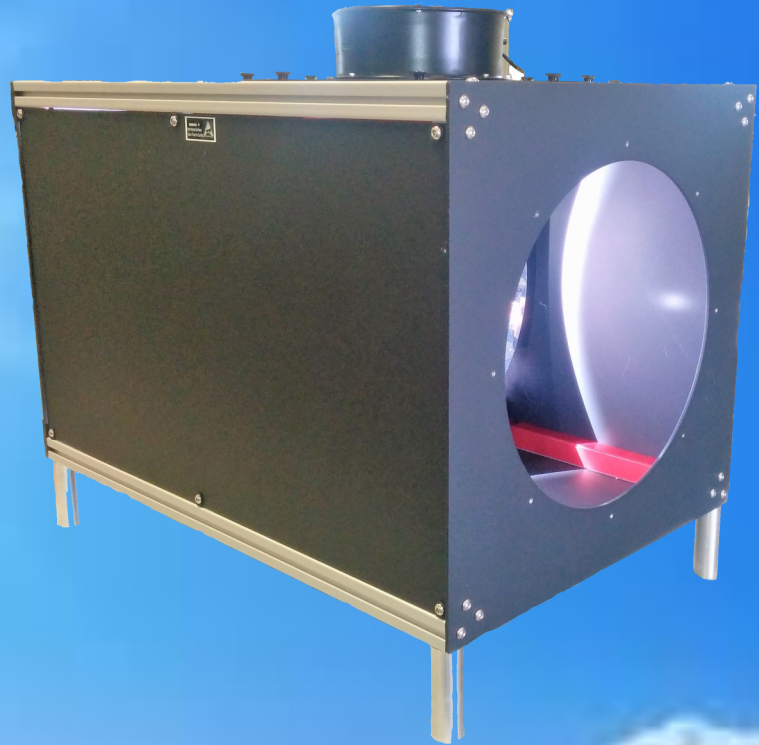


200-6.5k and 201-6.5k Lamp Housing



Features

- Turn Key Operation
- Up to 6 kW power arc lamp or QTH
- Elliptical Reflector; Parabolic Reflector or Spherical Reflector combined with refractive optics
- Low Cost
- Multiple Accessories

Applications

- High Power Solar Simulator
- Tunable Light Source
- Coupling with optical fibers and cables.
- Photo-Voltaic Testing systems

200-6.5k and 201-6.5k Lamp Housing

A. Overview



电话: 0755-84870203

邮箱: sales@highlightoptics.com

The 201-6.5K and 200-6.5K series lamp housings are the most powerful Sciencetech arc lamps with vertical and horizontal mount orientation. They have a modular design which allows you to customize depending on the required application in collimating or focusing operational mode. Depends on the operational mode they can have elliptical or parabolic reflector combined with correspondent refractive optics.

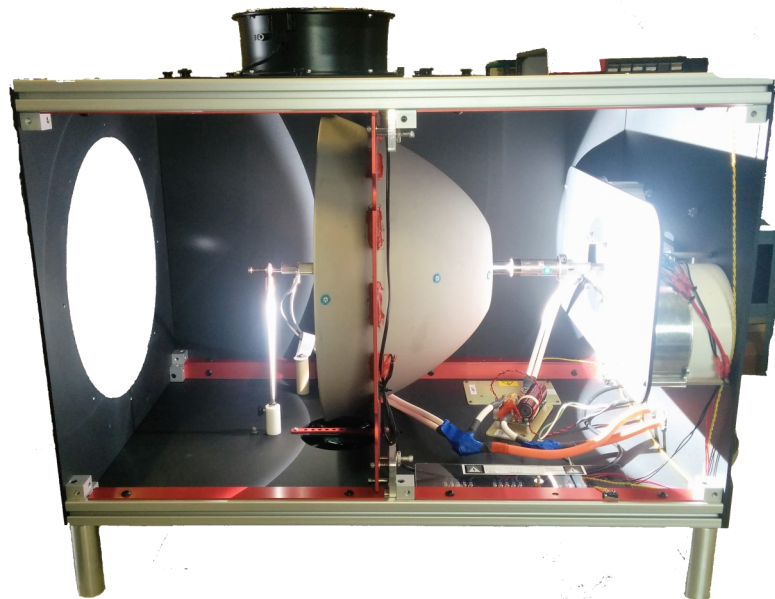
The 201-6.5K and 200-6.5K lamp housings are designed for 3000W—6KW Xenon, Mercury-Xenon, and Mercury short arc lamps as well as 2000W-5000KW QTH lamps (sold separately) .

A variety of output port coupling accessories allows for the attachment of refractive or reflective collimating optics.

A number of beam line options are available such as refractive condensing optics to refocus the output light into a very fine focal point for maximum brightness. This is ideal for fiber optic applications where the light needs to be condensed into a small entrance of a fiber bundle. Other beam line accessories available include filtering accessories and focus point

In housing 201-6.5K the arc lamp or QTH lamp is mounted in a vertical position. Radiation is collected from the side of the lamp. A back spherical reflector mounted on adjustable alignment pins redirects a significant amount of the lamps radiation to the front exit port increasing the amount of light collected and allowing for a more uniform beam (optical configurations extra).

The 201-6.5K and 200-6.5k lamp housings include a forced air-cooled fan mounted on the top panel of the lamp house. The fan draws air from the chamber exhausts it out the top while rear blower's cool the reflector and lamp.



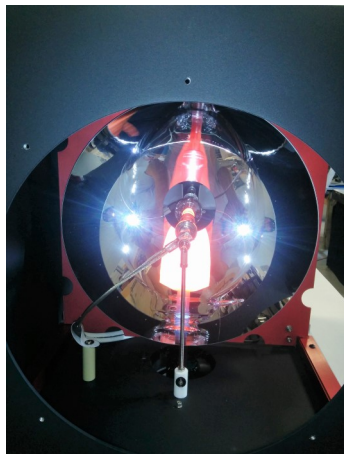
200-6.5k and 201-6.5k Lamp Housing

B. Specifications

The specifications section should include a table of technical specifications as well as any general information required to understand or explain these specifications. Typically the majority of this section will be dominated by a table of technical information.

The specifications section should include a table of technical specifications as well as any general information required to understand or explain these specifications. Typically the majority of this section will be dominated by a table of technical information.

Model	Vertical (100-9217)	Horizontal with Elliptical (100-9216)
Lamp House Model	201-6.5K	200-6.5K
Lamp Power	3000-6000 W	3000-6000 W
Lamp Type	Xenon; Xenon-Mercury; Mercury Arc Lamp or QTH	Xenon; Xenon-Mercury; Mercury Arc Lamp or QTH
Optics	Spherical Reflector	F2.5 Elliptical Reflector or Parabolic Reflector
Center Beam Line Height (mm)	447 mm	419 mm
Power Supply Model (included)	501-6.5K	501-6.5K
Dimensions (LxWxH) (mm)	660x609x1137	972x609x812
Weight (kg) Without power supply	40	40
Blower Power Input	210-240 VAC	210-240 VAC
Power Supply Input	Hard Line	Hard Line



200-6.5k and 201-6.5k Lamp Housing

Accessories

The accessories section should be broken into two parts—accessories necessary for operation and additional optional accessories. Necessary accessories may include a list of the appropriate power supplies for each product in the product family, etc. Optional accessories may include a selection of bandpass filters, or stands or cell chucks, for example. There is no need to be exhaustive in the optional accessories section: a few highlights and a link to the appropriate page on the website is sufficient.

Electrical Accessories	SKU
6500 W Power Supply	150-9064
Computer Control Upgrade	Please inquire
Computer Controlled Shutter	Please inquire
Optical Feedback	115-9021
Flexible Ducting for External Ventilation	Please inquire
Custom Stands for mounting	Please inquire

Opto-Mechanical

Beam Turning Mirrors

UV Enhanced; Protected Alumi; Hot / Cold Mirror

Filter Box's and Related Optical Filters

Custom Rear Reflector (Vertical)

Custom Collecting Optics (Vertical)

The accessories section should be broken into two parts—accessories necessary for operation and additional optional accessories. Necessary accessories may include a list of the appropriate power supplies for each product in the product family, etc. Optional accessories may include a selection of bandpass filters, or stands or cell chucks, for example. There is no need to be exhaustive in the optional accessories section: a few highlights and a link to the appropriate page on the website is sufficient.



Power Supply 501-6.5kW

200-6.5k and 201-6.5k Lamp Housing

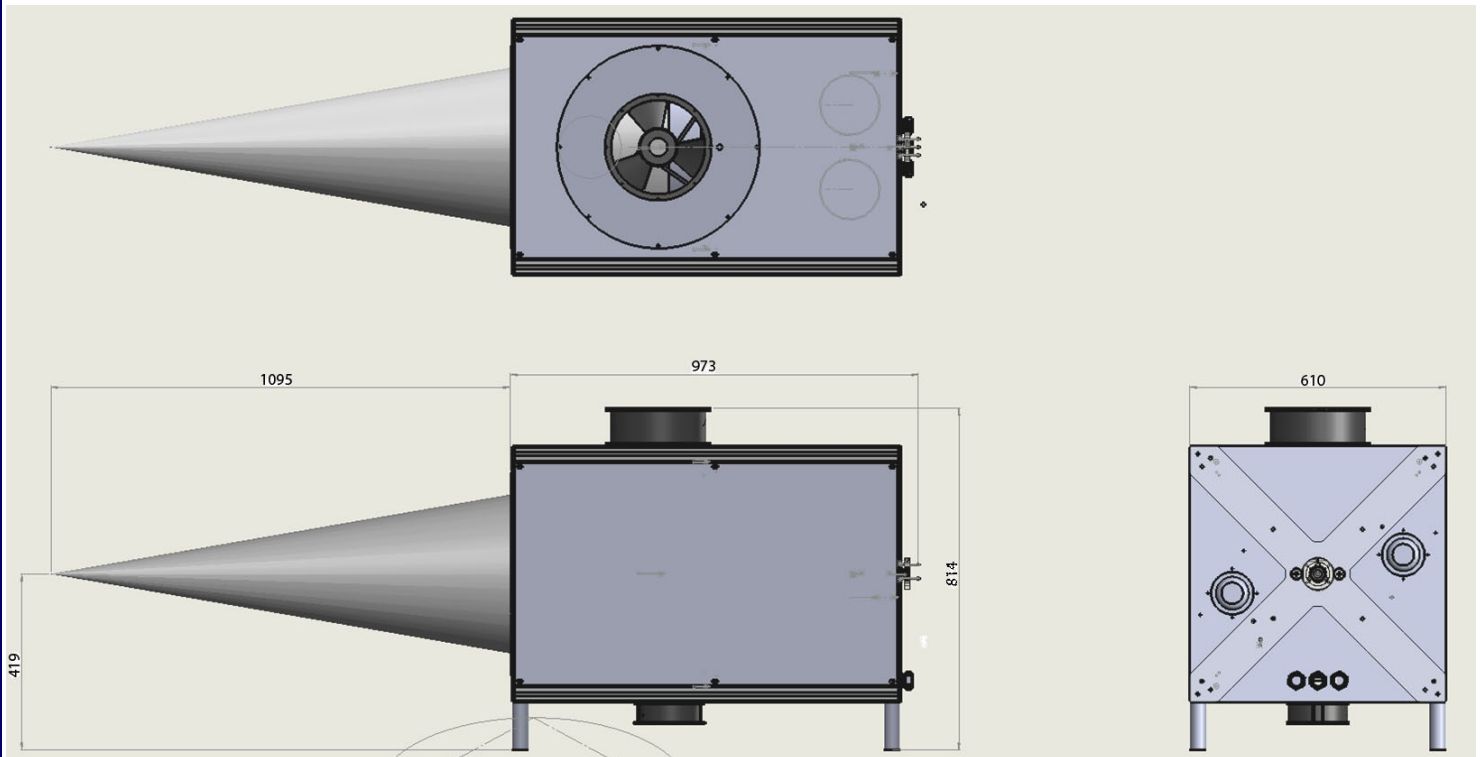
Dimensions:



电话: 0755-84870203

邮箱: sales@highlightoptics.com

Focused Elliptical

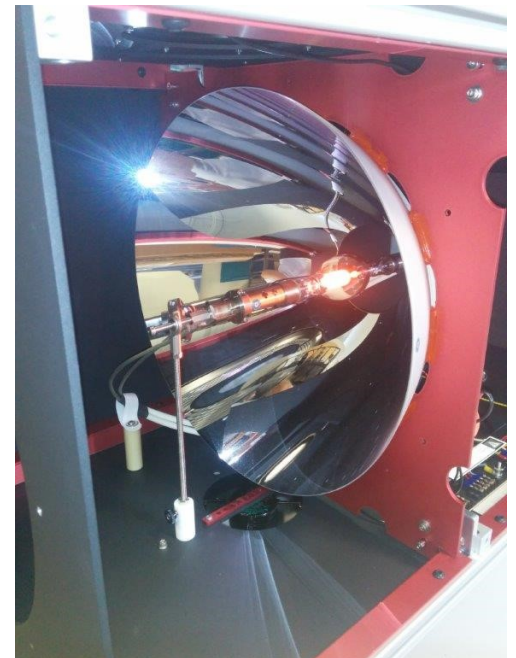
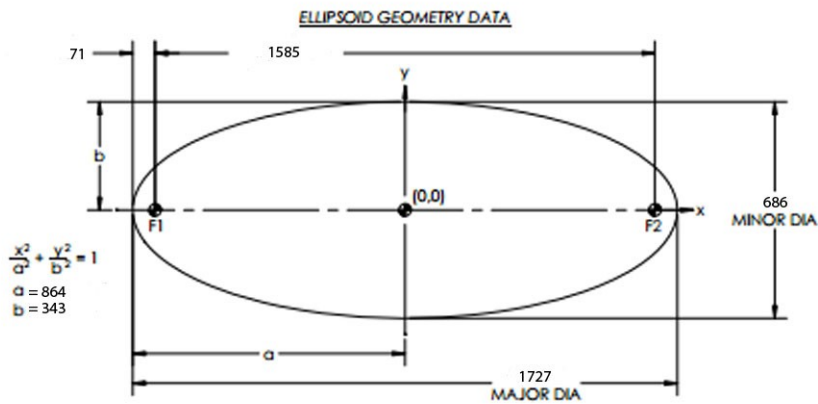
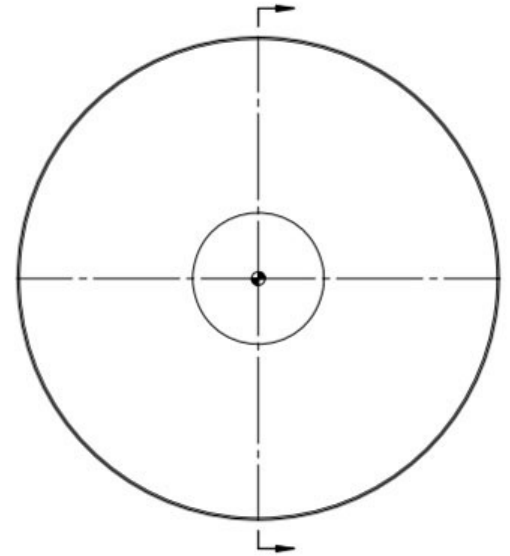
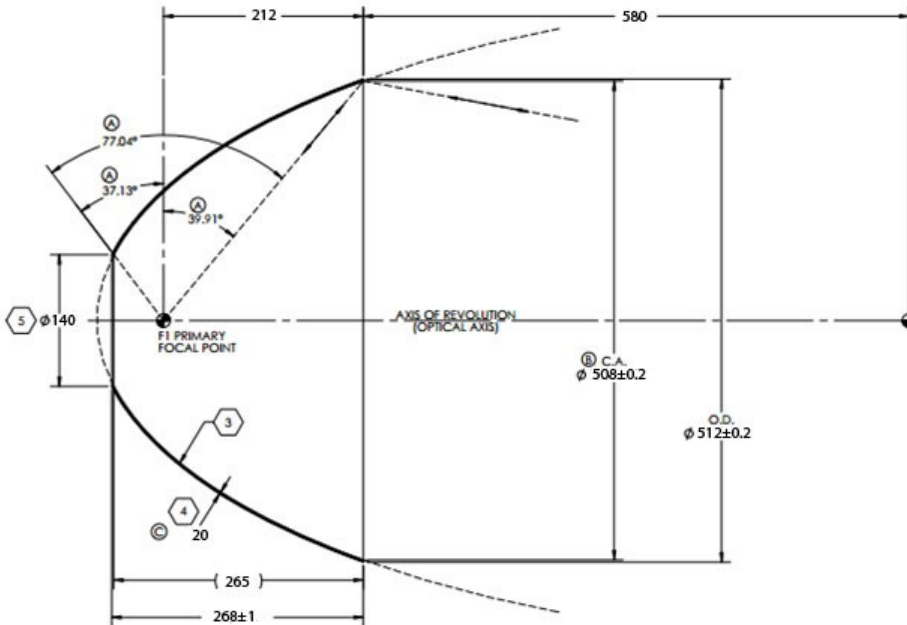


Dimensions		
Dimensions	(mm)	(inch)
Length	973	38.29"
Width	610	24"
Height	814	32"
Optical Axis	419	16.5"
Focal	1095	43.1 (F2.5)
Weight	40KG	

200-6.5k and 201-6.5k Lamp Housing

Dimensions:

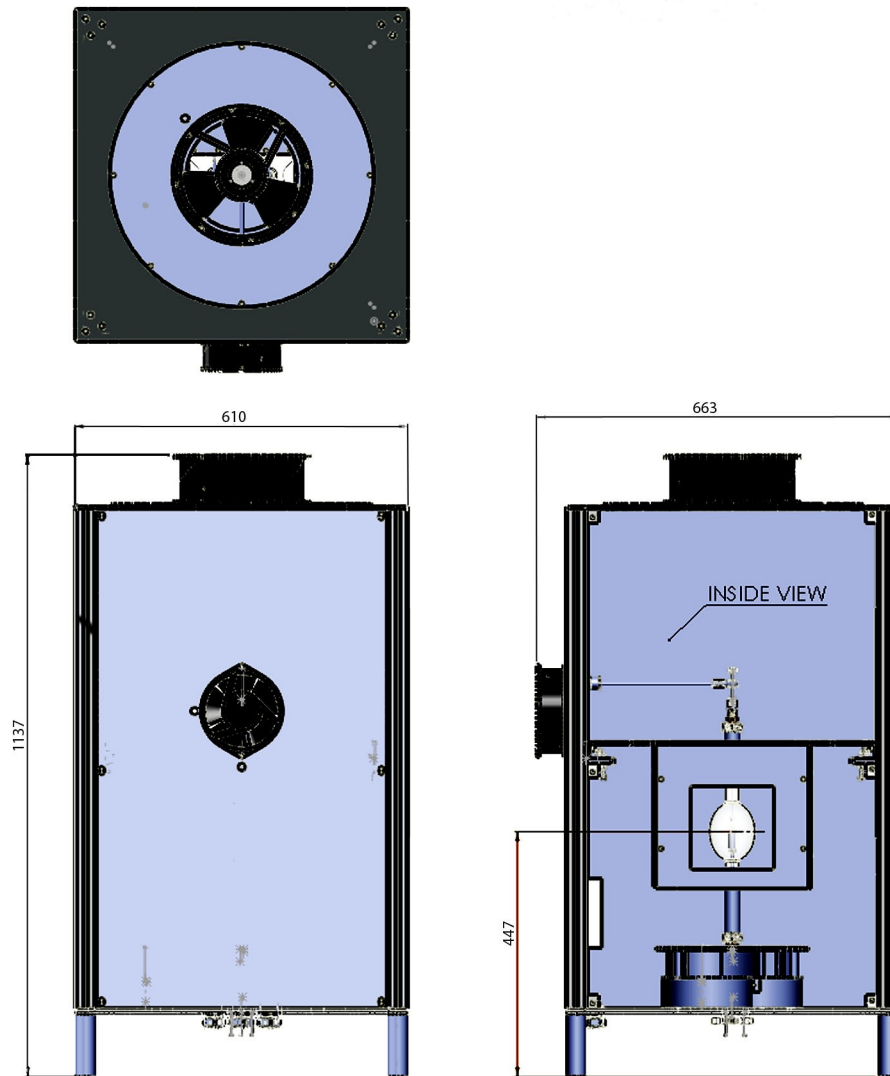
Elliptical Reflector



200-6.5k and 201-6.5k Lamp Housing

Dimensions

Vertical Housing



Dimensions

Dimensions	(mm)	(inch)
Length	663	26"
Width	610	24"
Height	1137	44.75"
Optical Axis	447	17.6"
	Collimated beam	
Weight	40KG	

200-6.5k and 201-6.5k Lamp Housing

Dimensions

Vertical Housing, Optical Plate

