

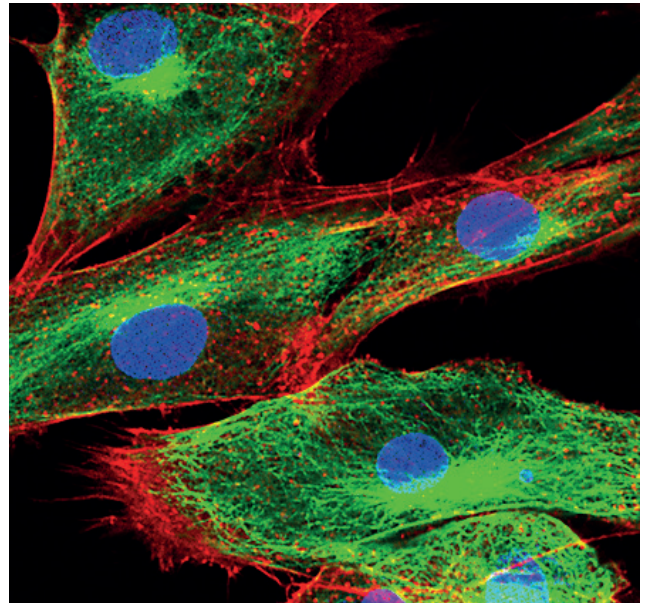
**海纳光学**电话: 0755-84870203  
邮箱: sales@highlightoptics.com**LUXYR****LQ-HXP 120**

## HIGHEST LIGHT INTENSITY ||

## IDEAL FOR FLUORESCENCE APPLICATIONS ||

## MERCURY-SHORTARC-REFLECTOR-LAMP 120 W

This compact device is ideally suited as an external light source for fluorescence excitation in microscopy. The coupling takes place via liquid light guide. The optimized internal airflow cools the lamp effectively and ensures quiet operation. A resetable operating hour counter enables the control of lamp life. The brightness of the light can be varied with a mechanical dimming unit in 5 steps (0 to 100%).

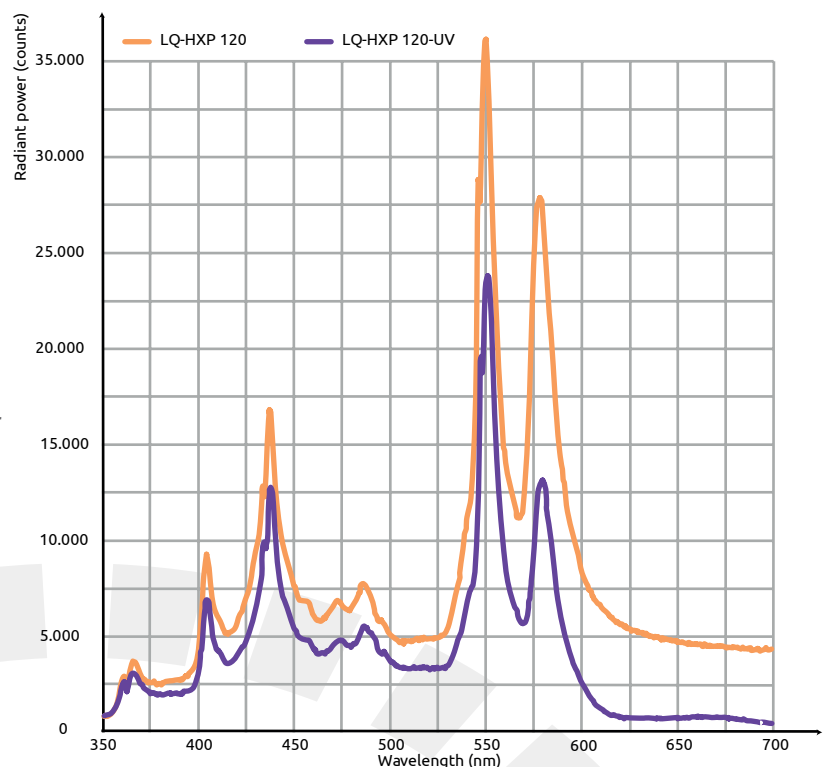


### HIGHLIGHTS

- Wavelength range 380 to 680 nm
- High lamp life 2,000 h
- Lamp life monitoring
- Lamp and reflector as a unit, easy lamp change, no adjustment
- Automatic glare protection
- No heat radiation exposure of the illuminated object
- 5 - step dimming
- Electronically controlled integrated shutter

### APPLICATIONS

- Fluorescence microscopy**
- Image processing**
- Forensics**





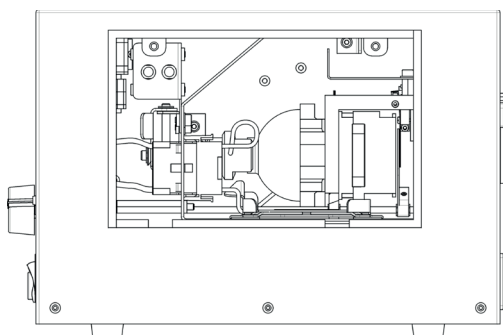
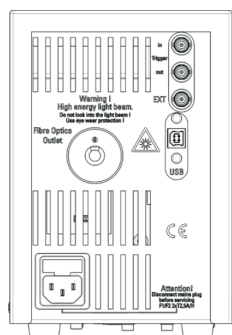
海纳光学 电话: 0755-84870203  
邮箱: sales@highlightoptics.com

LUXYR

# LQ-HXP 120



Technical data	LQ-HXP 120-3	LQ-HXP 120-5	LQ-HXP 120-UV
Features	Mercury short-arc reflector lamp		
Lamp type	HXP R 120W/45C VIS with focussed reflector (OSRAM)		HXP R 120W/45C UV with focussed reflector (OSRAM)
Light output (others on request)	Light guide retainer Storz long, for light guide active Ø 3 mm	Light guide retainer Storz long, for light guide active Ø 5 mm	
Filter    heat protection	UV-IR cut - filter		IR- reflection filter
Shutter	Electrical control via interface, max. frequency 40 Hz, switching time approx. 6 ms		
Interface	USB / CAN-BUS, BNC		
Dimming	Mechanically, 5 Steps 0 to 100%		
Operating hour meter	Display lamp operation hours, resettable		
Safety			
Safety circuit	Switches unit supply off when device lid is opened		
Excess temperature protection	Switches lamp voltage off in the event of excess temperature, switches on again after cooling		
Glare shield	Light output remains automatically closed as long as no light guide is connected		
Specifications			
Mains voltage	100 to 240 VAC		
Power frequency	50 to 60 Hz		
Power input	Max. 210 VA		
Dimensions			
Width x height x depth	210 x 130 x 290 in mm		
Weight	4,7 kg		
Order			
Scope of delivery	Device with lamp, mains cable and manual		
Accessories	Accessories such as replacement bulbs, fiber-optic cables and adapters can be found in the separate data sheet: <b>Compact light sources - accessories</b>    We also have solutions for multi-pin light guide couplings		
Order example	LQ-HXP 120-3		



海纳光学 电话: 0755-84870203  
邮箱: sales@highlightoptics.com