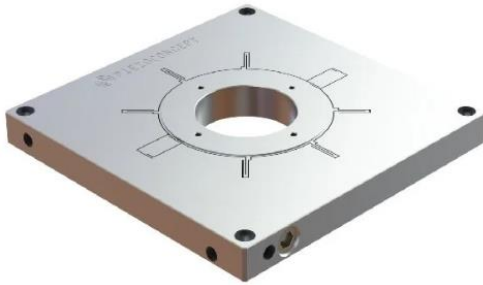


Technical parameter

TTH1.5

One axis high-speed stage (Theta)

TTH1.5



One axis high-speed stage (Theta). Controller included (USB optional).

The TTH is a 1-axis stage (Theta) with a range of motion of 5 mrad. It has an aperture of 35mm. This nanopositioner is part of our high-speed product line (High power controller available).

	TTH1.5
Range of motion (mrad)	5
Resolution (μ rad)	0.005
Noise floor (μ rad/sqrt(Hz))	0.0005
Repeatability (μ rad)	0.01
Linearization (typ.)	0.02%
Resonant frequency (Hz)	2000
Stiffness (N/ μ m)	N/A
Sensor	Silicon HR Sensor
Size W x L x H (mm)	117 x 117 x 12.6
Material	Aluminum
Cable length (m)	2
Controller	Standard or High Speed
Maximum load* (kg)	
Horizontal use	0.5
Vertical use	0.3

The TT1 is a 1-axis stage (Theta) with a range of motion of either 5 or 10mrad. It is the ideal tool for applications where optical beam steering is necessary.

This makes this high-speed stage a best-seller for applications such as particle tracking, optical tweezers, beam stabilization and scanning microscopy.

This nanopositioner is part of our high-speed product line (High power controller available).

